



Geological Society of Zimbabwe



***ANNUAL GENERAL MEETING
CHAIRMAN'S STATEMENT
Dr. Ali AIT-KACI
2015***

*26th February, 2016
The Country Club (CFX) , Brampton Road,
Harare*

GSZ Committee meetings – 2015

Office Bearers and attendance to meetings / 11

Member	Position	Attendance	%
A. Ait-Kaci Ahmed	Chairman	11	100 %
B. Barber	Vice Chairman/ Chamb. Of Mines Rep	9	81%
C. Mwatahwa	Hon. Treasurer/Membership	8	72%
K. Musiwa	Hon. Secretary	5	45 %
J. Kuhn	Administrator	11	100%
A. du Toit	Summer Symposium, Website	9	81%
G. Hanssen	Talks, Field trips	5	45%
P. M. Meck	Phaup Award	7	63%
F. Mugumbate	Geological Survey/ Phaup Award	6	54 %
E. Mugandani	Newsletter	8	72%
P. Matthews	Bulawayo Representative	0	0%
S. Zvikomborero	Menell Society Representative	2	18%



2015 INITIATIVES

Amendments to the Society Constitution :

Clause 4.1 : “ The Society shall consist of Ordinary Members, Honorary Members, Institutional Members, Student Members and Associate Members”.

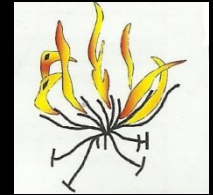
Clause 4.8 A : “An Associate Member shall be a person who expresses an interest in Geology but is not eligible to be an Ordinary Member or a Student Member”

Clause 8.3 : “No alteration or amendment to the Constitution shall be of any force or effect until the Commissioner General of the Zimbabwe Revenue Authority has been advised and has given his approval for purposes of the tax exemption status of the Society”



2015 initiatives

CODE OF ETHICS



A draft Code of Ethics was discussed by the GSZ Committee and reviewed and commented by Keith Viewing.

It is not adopted yet.

- **GSZ could:**
- – Draft a Code of Ethics
- – Check that the Code and Disciplinary Procedures are sufficient to qualify for inclusion on lists of ROPOs published by CRISCO associated bodies
- – Formally adopt a Code of Ethics
- – Commit to enforcing reported breaches etc according to the Constitution
- (Andrew du Toit, Summer Symposium 2015)
-**(To be kept in the Agenda)**



2015 initiatives :

REGISTRATION of the GSZ as a Professional Body?

- GSZ need to research the process required to go this route
- This will give a guide to the costs and systems required for implementation
- The GSZ needs to debate and develop clear objectives if it is embark on this course
- Government may force registration on the geologists
- GSZ needs to develop a clear position so that we can lobby for win-win outcome

(Andrew du Toit, Summer Symposium 2015)



2015 initiatives :

REGISTRATION of the GSZ as a Professional Body?

In Zimbabwe, engineers are required by an Act of Parliament to be registered with the Engineering Council

- There is growing pressure for this type of registration to be extended to geologists with the aims of :
 - Regulating who can call themselves a geologist
 - Upholding professional standards within the profession
 - Protecting the public from unqualified, unregistered practitioners
- **Registration is primarily a Government Requirement**

(Andrew du Toit, Summer Symposium 2015)

.....(To be kept in the Agenda)



2015 initiatives :

Protection and Preservation of Geological Sites

- A file about the Chewore-South Dinosaur footprint sites was transmitted to the Deputy Director of National Museums and Monuments (Ministry of Home Affairs) to have these sites officially protected.



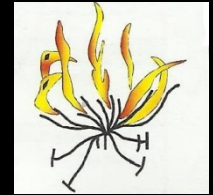
Massospondylus skeleton, Mana-Angwa



.....(To be kept in the Agenda)



2015 initiatives :



The Vice Chairman will be the GSZ Representative in the Board of the Chamber of Mines.

The Vice Chairman will be the GSZ Representative to the Mennell Society

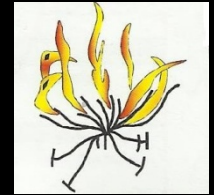
Collins Mwatahwa was appointed as the GSZ Academic Representative to the Zimbabwe School of Mines

Mennell Society and Geology Dpt : following their request, the Committee decided to donate the whole amount of the RAND Fund (1500 USD) to help students to organise a Field Trip to the Mberengwa GB in May. (A small report on that field trip is still awaited).

The Committee decided to re-start "Publications of the GSZ".



2016 Membership (paid up members)



20 Institutional Members

17 (+ 1) Honorary Members

70 (-1) Ordinary Members

01 Student Members

18 Associate Members

Total Members : 126 (+ 14)

*** The membership fees will increase in 2016 to 30 USD for members and 200 USD for Institutional Members



GSZ WEBSITE

- The GSZ Website was constantly upgraded and fed with events, notifications etc....
- (Thanks, Andrew and Julie)
- It is now fully operational....
- Two spaces are now dedicated to adverts insertions, at the cost of 50 usd/6 months each.



Field Trips 2015

- Three Field Trips were organized in 2015 :
- 1) Field Trip to the Chewore-South Dinosaur Footprint sites, 23-25 May 2015.
- 2) Pre-Symposium Field Trip to the NW Magondi Belt and Makuti Group, NW Zimbabwe, 19th November 2015.
- 3) Post-Symposium Field Trip to the Sinamwenda Impact Structure, Western Zimbabwe , 21-22 November 2015.



GEOLOGICAL SOCIETY OF ZIMBABWE
Field Excursion Guidebook

THE NTUMBE RIVER DINOSAUR FOOTPRINT SITES
(Lower Zambezi Valley, Chewore South)
Dr. Ali AIT-KACI
May 2015



ali_aitkaci@yahoo.fr

1) Field Trip to the Chewore-South Dinosaur Footprint sites.

Leader : Dr. Ali Ait-Kaci
Attendance : 16



Ali

Geological Society of Zimbabwe, Annual Summer Symposium,
Kariba, Zimbabwe, 20 November 2015



Field Excursion Guide-
NW Magondi Belt and Makuti Group,
NW Zimbabwe

Selected roadside exposures between Karoi and Kariba
19 November 2015

Excursion Leaders:

Sharad Master

EGR1, School of Geosciences, University of the Witwatersrand,
P. Bag 3, WITS 2050, Johannesburg, South Africa.
sharad.master@wits.ac.za

Tim Broderick

makan@zoi.co.zw



2) Pre-Symposium Field Trip to the NW Magondi Belt and Makuti Group, NW Zimbabwe.

Leaders: Dr Sharad Master and Tim Broderick

Attendance : 43





The Sinamwenda Impact Structure, Western Zimbabwe

Dr Sharad Master
School of Geosciences
University of the Witwatersrand
P. Bag 3, WITS 2050
Johannesburg
South Africa
Sharad.master@wits.ac.za

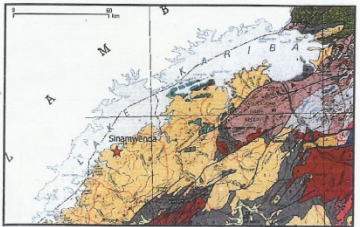


Figure 1: The location of the Sinamwenda Impact Structure in relation to Lake Kariba and the local geology of the Karoo Supergroup sandstones (beige colour) and overlying Karoo basalts (blue), and underlying lower Karoo Madumabisa Mudstones (grey), Sijirira Group (orange-red), and crystalline basement of the NW Maqondi Belt (pink).

3) Post Symposium Field Trip to the Sinamwenda Impact Structure, Western Zimbabwe. Leader : Dr. Sharad Master Attendance : 37



Sampling



Gravimetry



The Ladies of the trip..

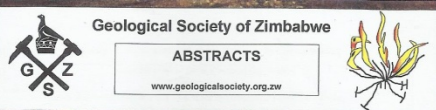
Second day of the trip at Musongo Safari Camp



Jaws of lung fishes



Dinosaur's teeth and bones



Summer Symposium at Carribea Bay, Kariba, 20th of November, 2015

Organisation : Andrew du Toit and Julie Kuhn

Summer Symposium

8am to 5pm, Friday 20th November 2015
Carribea Bay, Kariba

Final



Attendance : 45
Official Opening : **Temba Hawadi**, Director ZGSurvey

Keynote: **Dr Sharad Master** : The vanished Orogeny :
Geochronology of Palaeoproterozoic “basement” gneisses of
the Kariba and adjacent areas, Western Magondi Belt.

and:

Andrew du Toit : Professional status and the Geological Society of Zimbabwe.

Tony Martin : Impact of hydrothermal solutions on the world economy.

Sarah Glynn : Implications for the extent of the Zimbabwean Craton, from U-Pb zircon geochronology of the Dete-Kamativi inlier and the Choma-Kalomo Block.

Tim Broderick : Kariba . 60 years since inception. A geological and geotechnical review.

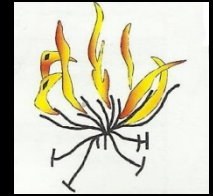
Andy Moore : Challenges in the interpretation of luminescence dating in Southern Africa.

Gordon Chunnnett : Waterberg Pt deposit, an update .

Tenyears Gumede : Ruby Bearing Amphibolitic Gneisses -Montepuez Complex, Mozambique

Dr. Sharad Master : Summary.

Talks 2015



- Only two talks this year, both given by our Vice Chairman Brent Barber and both on the Karoo:
- 1) Review Of The Karoo Supergroup and Younger Rocks In The Zambezi Valley, on Friday 11/12/ 2015.
 - (followed by a Christmas braai, organized by the Mennell Society)
- 2) Overview Of The Known Large Scale Coal Potential Of Zimbabwe, on Friday 29/01/2016.



Coal is cool.....



The 3 GSZ Newsletters of 2015-2016



Geological Society of Zimbabwe



Newsletter

June 2015

No. 2 of 3 of 2015



Fun was had by all who participated in the Chewore dinosaur field trip over the Africa Day weekend
Photo collage by Andrew du Toit

www.geologicalsociety.org.zw

The Geological Society of Zimbabwe, P.O. Box CY 1719, Causeway, Harare

Geological Society of Zimbabwe



Newsletter

October 2015

No. 3 of 3 of 2015



Heavy mineral concentrate (Total weight 4.974g) from the Somabula alluvial deposit.
One diamond crystal (octahedron/dodecahedron) of gem quality (0.145g) is featured in the centre. Other gems shown are: chrysoberyl, alexandrite, sapphires, garnet, amethyst, topaz ("Somabula blue" and white), aquamarine, hoari and native gold.

Natural History Museum, London collection (Sample 937). Photo: Susan Stockmayer.

www.geologicalsociety.org.zw

The Geological Society of Zimbabwe, P.O. Box CY 1719, Causeway, Harare

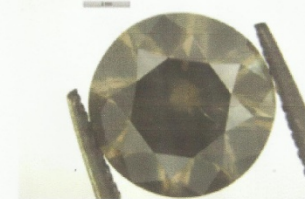
Geological Society of Zimbabwe



Newsletter

February 2016

No. 1 of 3 of 2016



Faceted round brilliant cut Marange diamond, 8.14mm diameter. Brown colour with a few visible channel inclusions. Photographed by Stewart Cole

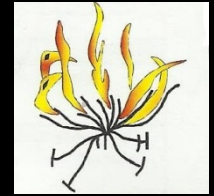
www.geologicalsociety.org.zw

The Geological Society of Zimbabwe, P.O. Box CY 1719, Causeway, Harare

Thanks to Tim Broderick and Ernest Mugandani.....



Macgregor Memorial Lecture 2016 by Martin Prendergast



- **Provisional title** : “Less well known mineral deposits of the North Dyke”. Effectively, the nickel laterites and the Snake's Head PGE deposits.
- **Proposed field trip:**
 - Drive up the Dyke taking in the Mutorashanga view point, Mpinge, and a stop on the Guruve road to view broad geomorphological features.
 - Traverse along part of the Dyke near Mvurwi Peak (east of Guruve).
 - Road traverse along the Alpha Trail to view some of Snake's Head stratigraphy and deformation.
 - Climb up to Eagle's Crag for a panoramic view of the Musengezi Gorge and the Snake's Head project area to the west. Ultramafic and mafic stratigraphy, and deformation.
 - Walk up part of the Musengezi Gorge (from the base of the escarpment southwards) to view the Rushinga gneisses, the thrust contact between the gneisses and the Great Dyke, and the variably metasomatised magnetite gabbros at the top of the Mafic Sequence.



Thank you...